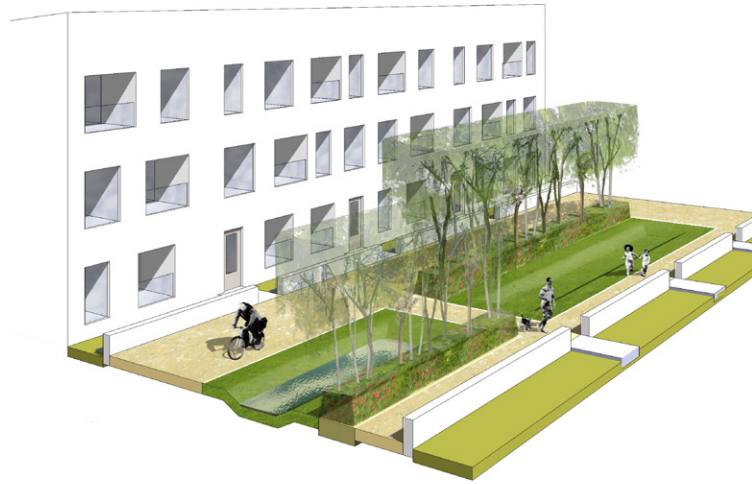


## Green Infrastructure Strategies for Dublin City Council

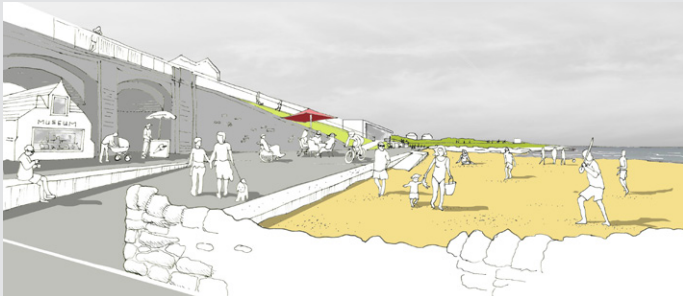
A pilot project to develop green infrastructure strategies for Local Area Plans. Two contrasting case study areas were chosen, Georges Quay; a high density city centre area and the Naas Road, a low rise industrial complex and residential suburb. As part of the commission in-house CPD training was provided to the City Councils; planners architects, engineers and landscape architects. This project was a collaboration between; Áit, planners Norton UDP, ecologist Mary Tubridy and Compass Informatics.

*Áit principal Daibhí Mac Domhnaill has given presentations on Green Infrastructure at the National Planning Conference 2011 and at the Design Dialogue event as part of Innovation Dublin 2011.*



## Public Realm

### Balbriggan Public Realm Plan



The Balbriggan Public Realm Plan was officially launched by Minister for Health, Dr. James Reilly, on October 4th 2011 in Balbriggan Town Hall. A large crowd of 80 or more turned out for the event. The Plan sets out a vision for the regeneration of the town centre with a combination of long term strategies and quick win initiatives for immediate implementation. The plan is a successful collaboration between the Chamber of Commerce and Town Council; with funding provided by the Heritage Council. Áit collaborated in the making of the plan with a team led by Loci.

## Streetscape Regeneration

### Waterford City Centre



The R680 Greenroute project is currently on site. To date almost 2,000m<sup>2</sup> of new Irish Limestone paving has been laid as part of a phased regeneration of the The Mall and South Quays. Sections of historic Carlow flag paving in front of City Hall and on Custom House Quay have been carefully restored. The Greenroute project adjoins the Viking Triangle and the recently renovated Bishop's Palace. Áit have provided hard landscape design services including; specification for materials and workmanship, meticulous setting out plans and on site supervision and quality control.

*Consulting Engineers: DBFL*

## Abbeyleix Sustainable Community Plan

Undertaken in collaboration with Loci and de Blacam and Meagher Architects. The Sustainable Community Plan was a pilot funded by the Dept of the Environment, Heritage and Local Government. The Sustainable Community Plan will provide a best practice template for greater community participation in plan making.



## Charlemont St. Regeneration PPP

Design of a new public square, streetscape and residential courtyard gardens as part of the regeneration of the Charlemont Street social housing complex in Dublin City Centre. The project is a Public Private Partnership between Dublin City Council and Alcove Properties.



## Zhigullii Technopark Masterplan, Russia

Masterplanning of a new Technopark for the Government of Samara with architects MOLA International. The site is a greenfield site located adjacent to an existing car manufacturing plant on the outskirts of the communist era city of Toyliatti.



## Kilruddery Demesne Action Plan

Preparation of an Action plan to guide the sustainable environmental and economic development of Kilruddery Demesne. Áit contributed as part of a multi-disciplinary team headed by; Pyramid Property and Project Management and MOLA Architecture. Áit provided landscape appraisal and strategy inputs to the plan.

